

BT-CSIM2

# Intramuscular Injection Training Model

## USER GUIDE



## **Product Information**

Product Name	Intramuscular Injection Training Model
Model Name	BT-CSIM2
Manufacturer	BT Inc.

## **Product Specification**

Dimensions	330 X 260 X 380mm
Weight	5.5kg

## **Customer Service**

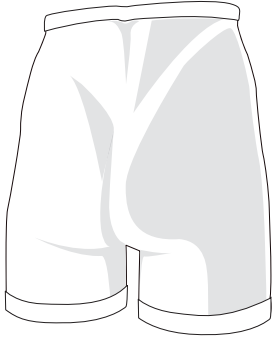
Website	<a href="http://www.btinc.co.kr">www.btinc.co.kr</a>
Address	A-313, Samsung Techno-valley, 140, Tongil-ro, Deogyang-Gu, Goyang-Si, Gyeonggi-do, 10594, Republic of Korea
Telephone	+82-2-2038-2903
E-mail	<a href="mailto:bt@btinc.co.kr">bt@btinc.co.kr</a>

# **Cautions**

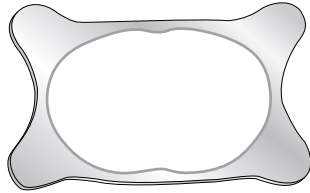
Please read it carefully to ensure correct usage and user's safety through understanding of the product.

- Ⓢ Use only components provided or approved by BT Inc.
  
- Ⓢ Do not use the product for other purposes described in this manual.
  
- Ⓢ If you disassemble or modify the product without any permission by BT Inc, you cannot get the warranty. Also, making imitated or altered products for commercial purposes are prohibited by law.
- Ⓢ Keep the product away from water or moisture. If the product gets wet, do not turn it on.
  
- Ⓢ Do not keep the product near hot places such as heaters. Deterioration of product or internal damage might occur
  
- Ⓢ Never clean the product with chemical substances such as solvent, benzene or thinner, as these may cause ignition or cause the surface deterioration.
  
- Ⓢ Please make sure that clean water is the only fluid of injection
  
- Ⓢ BT Inc. can change or adjust the product specification without any notice in order to improve the product.

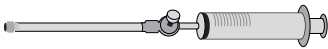
# Components



**Buttocks Body model**



**Positioning holder**



**Air pumping syringe**



**Drain bottle**



**Drain tube**

\* etc. - Storage case

## Consumables & Recommended Clinical Supply Sizes

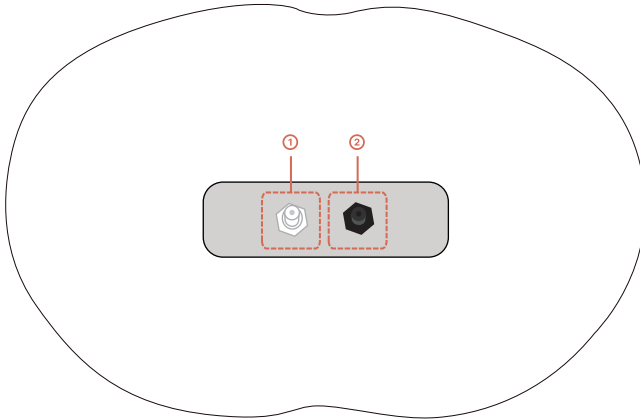
Consumables	
• Skin(buttocks)	

Recommended Clinical Supply Sizes	
Needle	3cc-5cc, 23G

- The following clinical supply sizes are recommended for use with BT-CSIM2 model.
- Other sizes may cause damage to the products.
- Lifetime of the consumables may differ depending on the skill level of the users.

# Hardware

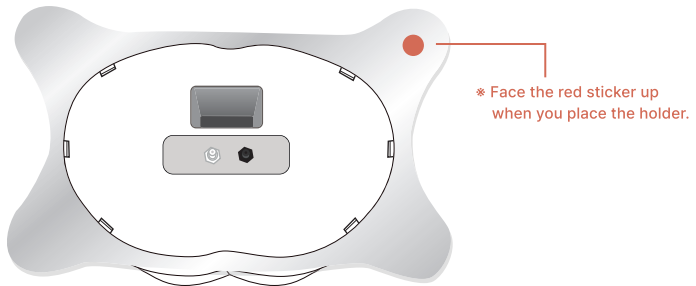
## 1. Features & Functions



① Air pumping connector : Connect the Air pumping syringe.

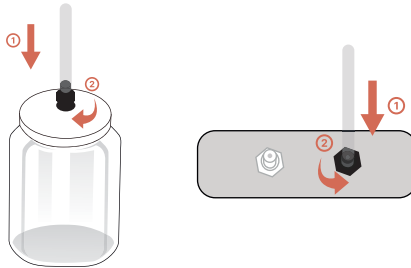
② Drain connector : Connect the Drain bottle container.

## 2. Assembly of positioning holder



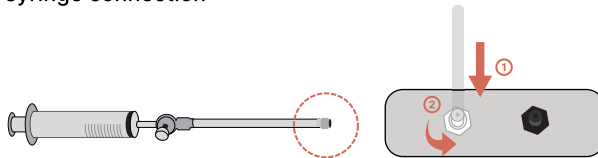
- The holder supports the position of the buttocks body model for various injection postures.
- Press down the buttocks holder on the top of the buttocks model until the holder snaps in hooks and you hear a click.
- When you remove the holder from the buttocks, Press the hook levers on the cover plate with both thumbs and lift up the buttocks holder.

### 3. Installation of drain bottle

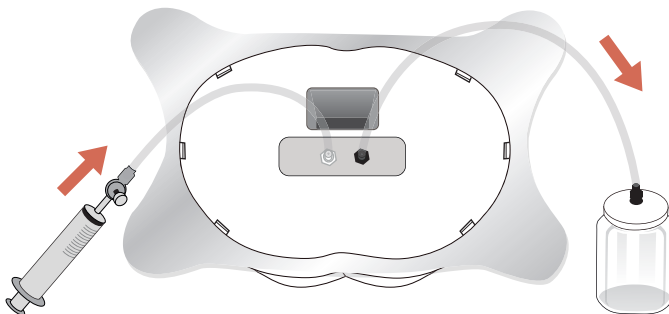


- Please connect the drain tube to drain bottle and drain connector.

### 4. Air pumping syringe connection

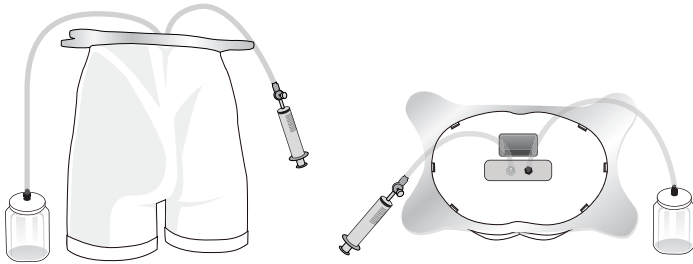


- Please connect the air pumping syringe to the air injection connector(white color).



- In order to drain the injected liquid from the buttocks model, pumping the syringe piston with multiple times.

## 5. Injection practice



### < Complete set up of the Product >

- ① Drain bottle and buttocks holder to the buttocks body model referring to the instructions of "Hardware".
- ② Use clean water only for injection practice and you must connect the drain bottle.

#### \* Cautions for injecting fluid

- Only the **clean water** is allowed for injection.
- Use clean water only for injection practice and you must connect the drain bottle.

## ■ Cleaning and Storage

- If you need to store the product for long periods of time, please wipe the product with ethanol cotton of fabric. After the buttocks model is dried, please putting the "Baby powder" all around the buttocks skin and wipe the product again with your habds of soft clothes.



BT-CSIM2

# Intramuscular Injection Training Model

A-313, Samsung Techno-valley, 140, Tongil-ro,  
Deogyang-gu, Goyang-si, Gyeonggi-do, 10594, Republic of Korea

Homepage: [www.btinc.co.kr](http://www.btinc.co.kr) / E-mail: [bt@btinc.co.kr](mailto:bt@btinc.co.kr)  
Tel: +82-2-2038-2903, +82-51-903-1144 / Fax: +82 303-3130-0607

Copyright(c) BT Inc. All rights reserved.